



BERESFORD HOUSE

McLAREN VALE

A BLEND OF LUXURY IN EVERY
DETAIL AND THE PICTURESQUE
BEAUTY OF A WORLD CLASS
WINE REGION.



Located in the world-class wine region of McLaren Vale, Beresford House has been redeveloped with lavish care and an eye to indulgent detail.

Built with modernistic architectural precision, this private retreat features imported Italian furniture, luxury fittings, top of the range appliances and eclectic artworks, creating an atmosphere of unparalleled luxury. Bounded by picturesque vineyards, whether it's a luxurious and private weekend escape or a bespoke event, this magical property is the essence of luxury and romance.



Photography credit: Ellen Heather Photography

Perfection is Yours

Beresford House, the perfect location to ensure that your private event is as spectacular as the setting itself.

Your bespoke celebration, a blend of luxury in every detail and the picturesque beauty of a world class wine region. You will have visual perfection and an event organised to absolute precision, the house features deluxe event spaces that can be perfectly customised for a range of private events.

From seated functions in the Gallery Room or cocktails and canapés on the Bell Tower Deck as the vineyards form a stunning backdrop, we work closely with you throughout your event planning process for an experience tailored specifically for you. With an array of gourmet cuisine options, and of course our spectacular, award-winning wines to match.





MAKE USE OF THE
ENTIRE HOUSE AS
WE INTEGRATE OUR
EVENT SPACES FOR
A SEAMLESS DAY.

We will work closely with you to adapt our majestic venue to suit your preferences. Luxury accommodation for the couple, bridal party or family members, forms part of the stunning wedding experience at Beresford House.





FOOD AND WINE

Established in 1985 in the heart of McLaren Vale, Beresford Wines is family-owned and passionately South Australian.

Our winemakers apply their extraordinary knowledge and expertise to handcraft wines of celebrated distinction, heroing the individuality and diversity of the McLaren Vale region. We offer a tailored food and wine experience that you will remember forever, and will work closely with you to taste through our range of wines. Combining our high quality on-site facilities and world class chefs we will develop a masterly crafted menu to suit your specific event.

BERESFORD HOUSE

Estate Hire: \$10,000

Inclusions:

- Exclusive use of Beresford House.
- Ceremony on Pepper Tree lawns.
- 2 nights' accommodation in the Grenache Villa (up to 6 guests).
- 1 nights' accommodation in the Shiraz Villa (2 guests).
- Breakfast provisions for both nights in the Grenache Villa and the one night in the Reserve Suite.
- Use of tables, chairs, signing table, ceremony chairs, linen, cutlery, crockery, glassware.
- Set up and pack down of event.
- All beverage and wait staff.
- Pepper Tree Lawn reception additional \$5000 set up fee

Please note: Use of any external cutlery, furniture etc. will be at your own cost and does not reduce the venue hire.





FOOD PACKAGES

Classic: \$150 per person

Choice of 3 canapes, set entrée, choice main, shared sides, plattered wedding cake

Estate: \$175 per person

Choice of 3 canapes, choice entrée, choice main, set dessert, shared sides, plattered wedding cake

Reserve: \$200 per person

Choice of 3 canapes, choice entrée, choice main, choice dessert, plattered wedding cake

Cocktail:

\$95 per person

8 choice - 3 cold, 3 hot, 1 substantial, 1 dessert

\$110 per person

10 choice - 3 cold, 3 hot, 2 substantial, 2 dessert

BEVERAGE PACKAGES

Classic: 6hrs \$75 per person

Angelique, Chardonnay, Rose, choice of 2 Classic reds, Vale Beers (choice of 3), Bickford's soft drinks & mixers

Estate: 6hrs \$90 per person

Angelique, Chardonnay, Rose, choice of 2 Estate reds, Vale Beers (choice of 3), Three Oaks Cider, Bickford's soft drinks & mixers

Reserve: 6hrs \$105 per person

Angelique, Chardonnay, Rose, choice of 2 Estate reds, 3 spirits served after main course, Vale Beers (choice of 3), Three Oaks Cider, Bickford's soft drinks & mixers

Beverage Extension

Classic \$10 per person per hour (maximum 7 hours total)

Estate \$15 per person per hour (maximum 7 hours total)

Reserve \$20 per person per hour (maximum 7 hours total)



THE GALLERY ROOM

On the ground floor is our open plan Gallery Room, a diverse and striking space. It can be adapted for almost any use, from stand-up cocktail gatherings to sit down formal affairs. It's an ideal venue for weddings, family events or corporate gatherings – it can be modelled to your heart's desire.

This is a visionary space, at the leading edge of venue design. The owners display their modern abstract art collection in the Gallery Room and fully opening bi-fold doors allow guests to flow seamlessly out into the courtyard areas. There are three grand fireplaces, so the outdoor areas can be enjoyed in winter or summer.

The Gallery Room comes with the use of our large kitchen, so catering logistics are simple. We work closely with a local chef to provide a range of gourmet menu options.

Dimensions: 10m x 20m

Seated: 160

Cocktail: 200 Standing



PEPPER TREE LAWNS

Our lavish Pepper Tree Lawns bring a picturesque nostalgia to any outdoor gathering. Surrounded by Cabernet and Grenache bush vines, with outdoor fire pits, it's a space to feel at one with the glories of nature.

It is the perfect setting for a bespoke wedding ceremony or a gorgeous marquee style event. It is ideal when used in combination with one of the other event spaces on the Estate.



Dimensions: 15m x 25m

Seated: 300

Cocktail: 500 Standing

BELL TOWER DECK

One of Beresford's hidden treasures; Our Bell Tower Deck provides unparalleled 360-degree views of the Estate. The space is natural and unadorned, so it's very adaptable and nothing detracts from the truly magnificent outlook.

It houses the grand 1894 Henry Stuckstede cast bronze bell; crafted in St. Louise, USA where it took residency in a German church and was inscribed 'Friede Auf Erden', meaning Peace on Earth.

The tower has an elevator for disabled access, toilet facilities and a practical working kitchen for events taking place on the roof top. On a warm day, large marquee-style umbrellas fold out to shade your welcome guests.



Dimensions: 10m x 20m

Cocktail: 200 Standing

BERESFORD LUXURY SUITES

Grand Reserve Suites

Delivering unparalleled luxury, the Grand Reserve Suites are nestled in 70-acres of rolling vineyard. Boasting galley kitchenette, private bedroom, indoor & outdoor living spaces and private bathhouse.

Unwind in your outdoor terrace featuring a secluded private plunge pool and outdoor lounging area, creating your very own oasis wrapped in nature's tranquility.

Soak in your imported Italian freestanding bathtub pampering yourself with Luxury Australian made organic skincare then book your in-room massage or indulge in our extensive range of onsite experiences.

Sleep in your plush King Koil Platinum Experience King ensemble with adjustable base, select from our pillow menu then wake up to utter serenity before exploring the Estate and surrounding region.

Reserve Suites

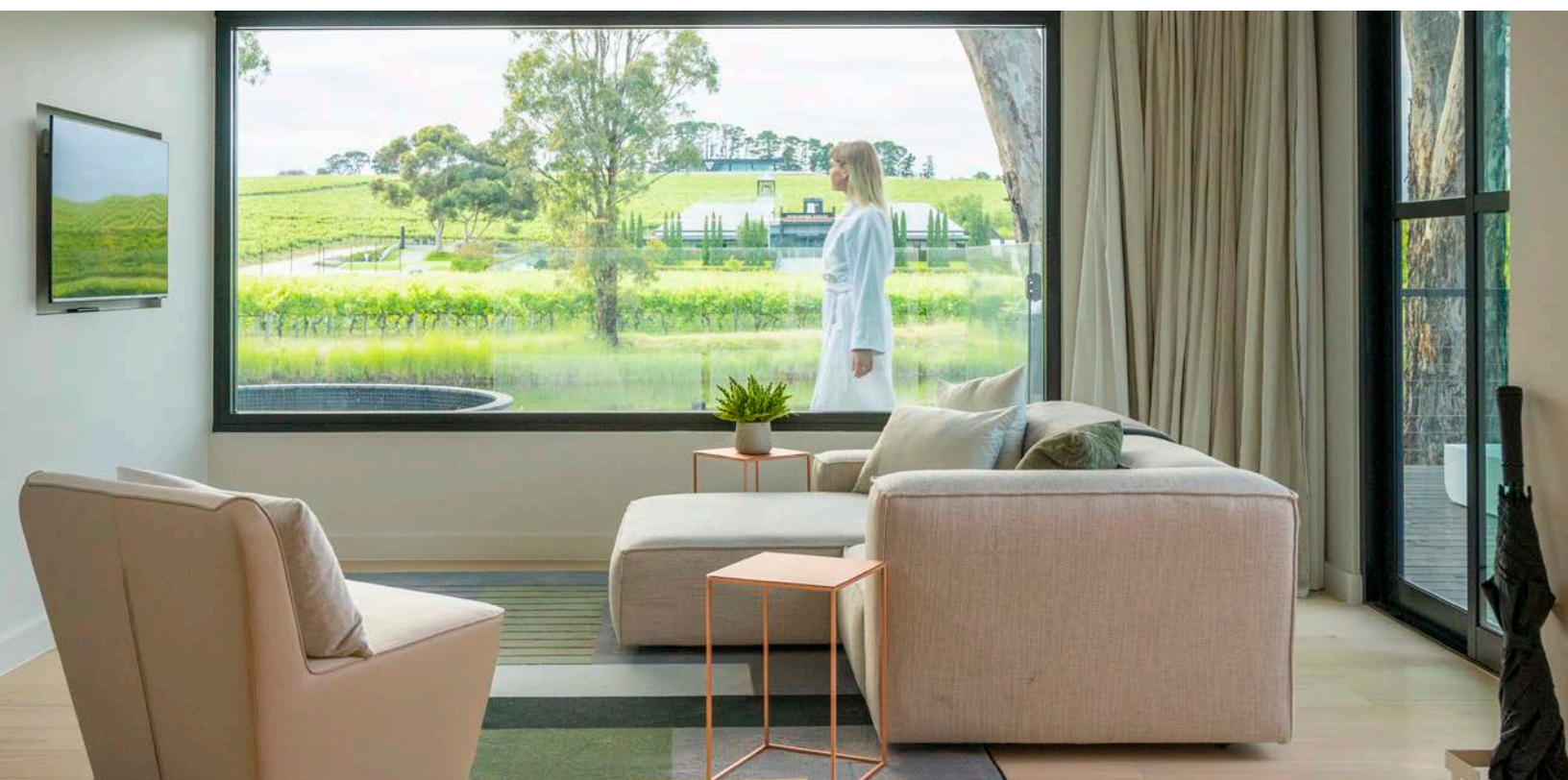
Exceeding expectations, the Reserve Suites line our 35-year-old Shiraz vines. Featuring luxury studio accommodation boasting kitchenette, indoor & outdoor living spaces and an ensuite.

Unwind in your outdoor terrace featuring a secluded outdoor entertaining area, creating your very own oasis wrapped in nature's tranquility.

Relax in your ensuite with dual showerheads and stylish gunmetal tapware, pampering yourself with Luxury Australian made organic skincare then book your in-room massage or indulge in our extensive range of onsite experiences.

Sleep in your plush King Koil Platinum Experience Queen ensemble, select from our pillow menu then wake up to utter serenity before exploring the Estate and surrounding region.

*Group rates apply to wedding bookings, POA





Shiraz Villa

The perfect lover's retreat, the Reserve Suite exceeds every notion of luxurious romance. This intimate and stylish suite sleeps two. It will satisfy the most elite of tastes and the keenest desire for peace and privacy, and the views will leave you breathless.

The suite has a select individuality, from the ultra-modern four-poster bed to the imported bespoke furniture in the lounge area; this is studio-style living at its most luxurious.

A very large, bright dressing chamber is an immaculate addition to the suite. With huge mirrors to the ceiling, a long vanity bench and perfect lighting, this room lacks absolutely nothing, except perhaps a bride and her stylists.

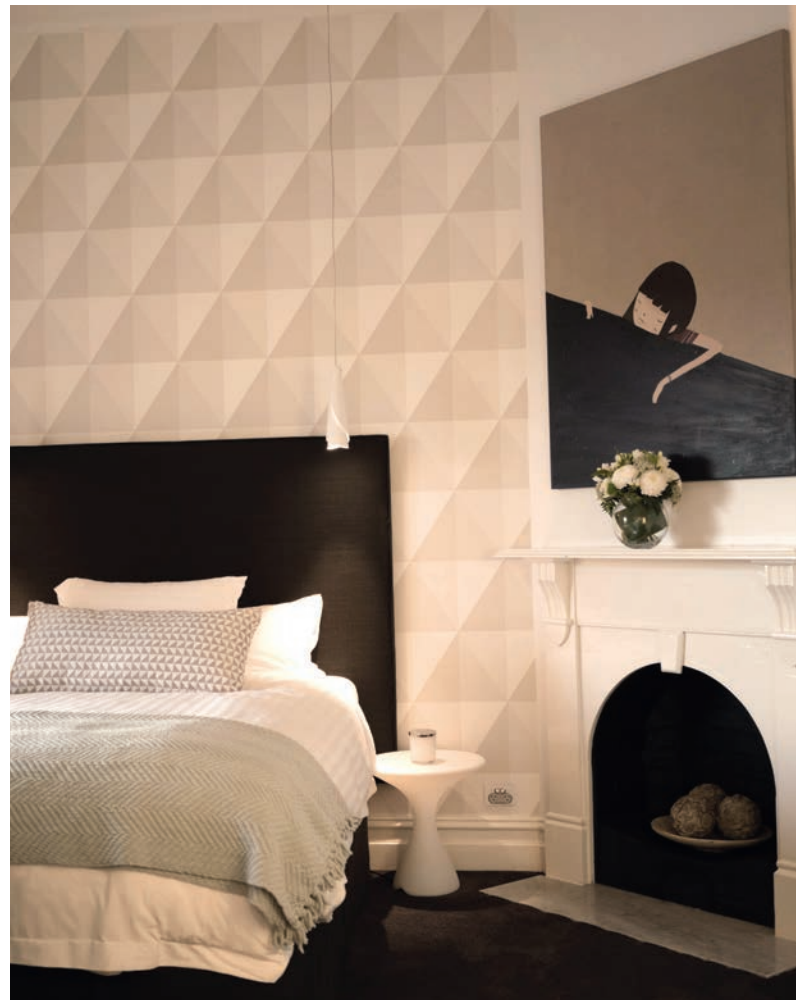
Visit us and you will see that this treasured space is the jewel in the Beresford crown. Every aspect has been exactly designed; furnishings and fittings have been sourced from the most exclusive of providers around the globe, and no detail has been overlooked.

Grenache Villa

A clever remodelling of the original 19th century cottage that sleeps six, Grenache Villa combines heritage and history with ultra-modern flair. Extraordinary views across our vineyards and abundant natural light give a sense of space and airiness, and the sophisticated design shows a personal touch of discerning taste.

There are three magnificently furnished double bedrooms and communal living room where imported lighting and the owner's original artworks set a tone of thought-provoking refinement.

The large and fully appointed kitchen is an inspiring space to work with the fresh produce of the McLaren Vale, gather around the marble dining table and share one of our fine Beresford wines.





Email: house@beresfordestate.com.au

Phone: (08) 8385 0362

Website: beresfordestate.com.au | [!\[\]\(666e09182d4cd268646ea700ea60dcdf_img.jpg\)](#) [!\[\]\(1ef1ef0bf9af6c6996401964cf280f2d_img.jpg\)](#) BeresfordEstate

Address: 158 Ingoldby Road, McLaren Flat, South Australia, 5171
